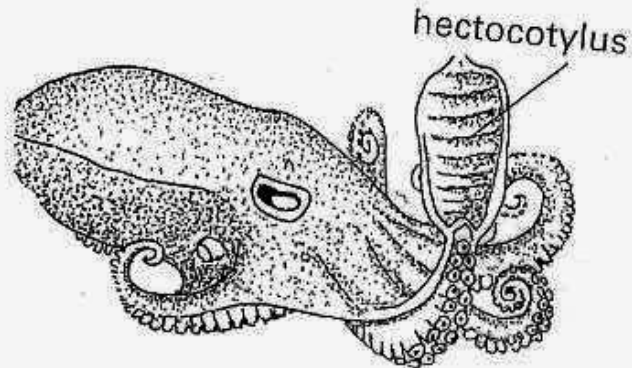


Octopuses are renowned for their intelligence. They can learn by watching others and have vertical and subfrontal lobes in their large brains that store learned information. Some octopuses exhibit play-like behaviors. Adept problem-solvers, octopuses can learn to solve puzzles and complete them faster in subsequent encounters.

Jet propulsion is the primary mode of cephalopod locomotion.

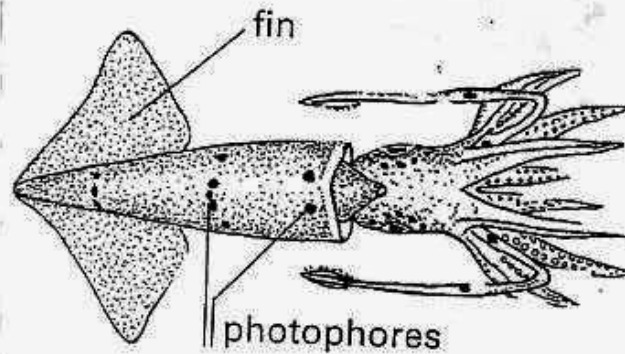


To reproduce, cephalopods use a special arm called a hectocotylus to deposit and receive sperm packets.

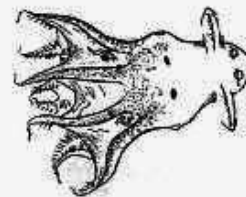
Two-thirds of an octopus' nerves are in its arms. Each of the 200+ suckers can be used independently.

Cephalopods have a closed circulatory system with hearts that are chambered.

Classification:
 Kingdom Animalia
 Phylum Mollusca
 Class Cephalopoda
 Subclass Nautiloidea (Nautilus)
 Coleoidea (Squid, Octopus, Cuttlefish, Etc)



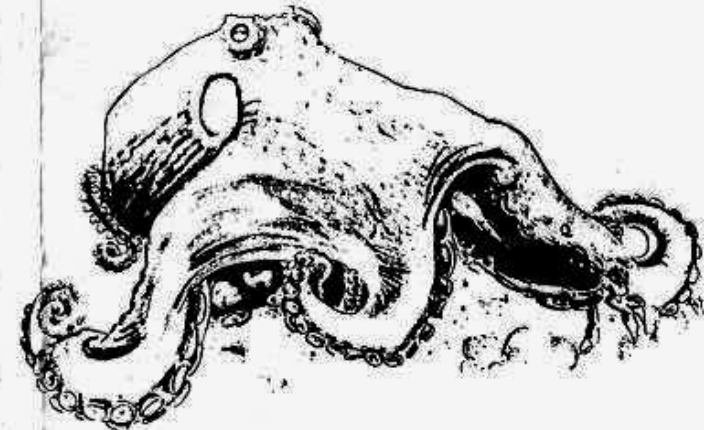
Some cephalopods have bioluminescent skin cells called photophores. The most dazzling is Firefly, or Sparkling Enope, squid.



Vampyroteuthis infernalis (literally Vampire Squid from Hell) shares this trait. And both *V. infernalis* and *Heteroteuthis dispar* can eject a bioluminescent mucus when threatened.

A special edition of 'Pocket'.
 More at <http://myspace.com/pocketzine>
 (c) 2006 Demion Armentrout. Col's O.
 armentrout@gmail.com

IMPORTANT INFORMATION ABOUT



C E P H A L O P O D S

More than mere molluscs, cephalopods were once Earth's dominant predatory lifeform. Evolved from shellfish, they ruled the seas long before the mammals' earliest ancestor took its first step on land.

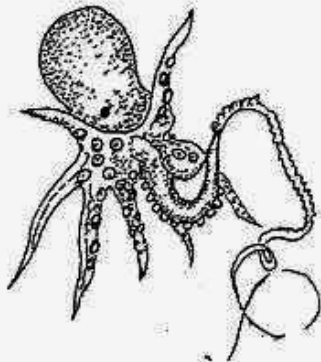
Cephalopods evolved from molluscs (clams, mussels). Only nautilus have true shells. Squid have an internal 'shell' called a pen. Argonauts create a shell for their eggs. Octopuses have no shell at all.

All cephalopods have chitinous, beak-like mouthparts. Chitin is also found in the shells of insects.

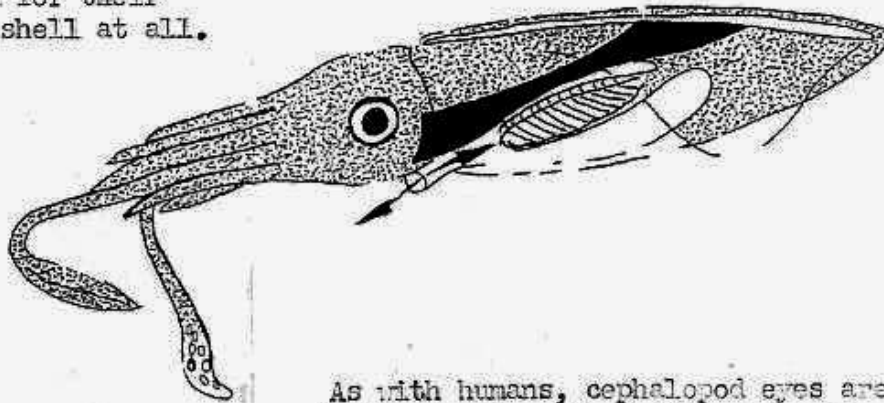
Cuttlefish have a unique 'cuttle bone' made of porous calcium carbonate. It is used to control the animal's buoyancy.

Instead of iron-based hemoglobin, cephalopod blood contains copper-based hemocyanin. As a result, their blood is has a blue appearance.

The Blue Ring octopus is the only octopus with venom deadly enough to kill a human.



Giant Squid can reach lengths of 60 feet, though they are rarely seen live.



As with humans, cephalopod eyes are highly developed but did not evolve along the same lines. Most species are colorblind.

Despite colorblindness, they use special skin cells called chromatophores to detect and match the colors of things around them.



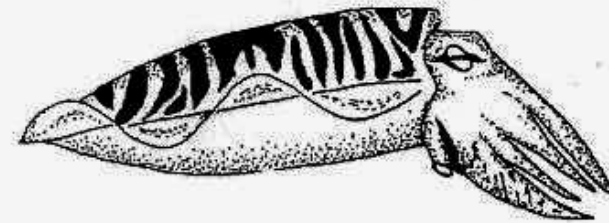
Nautilus eyes lack lenses and are similar in function to pinhole cameras.

The hectocotylus of male argonauts detaches from their bodies during mating and is not regenerated.

'Octopus' is based on the Greek language. Its correct Greek plural form is 'octopodes'. Marine biologists and other researchers use the plural form 'octopuses' in their writing.

Many species are commercially fished. Squid is referred to as calamari in Mediterranean cuisines. Shredded cuttlefish is served in Southern Italy. Sushi terms: ika includes squid and cuttlefish, Tako is octopus.

Cuttlefish ink is known as sepia and is used in sepia-toned photos and as tekhelet dye in Jewish prayer shawls.



Most octopus ink is brown, not blue or black.

Cephalopods only live a few years or, in some cases, a few months. Some species die immediately after mating.

Most cephalopods can change color to match their surroundings. Squid, which sometimes hunt socially, have a complex communication system that uses thousands of colors and patterns.